

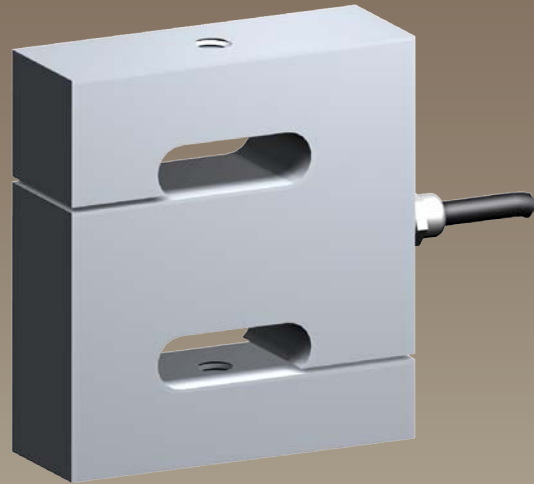
Description

The STA-1 series load cell is ideal for measuring both tensile and compressive forces. The standard metric threads at each end of the load cell are designed to accept standard spherical seating rod-end bearing.

The STA-1 is suitable for many applications where a tension and compression load cell is required, for high accuracy measurements. Applications such as vessel weighing, material test machines and dynamometers are a few examples.

The STA-1 series can be supplied on its own or combined with our extensive range of instrumentation to provide a complete load monitoring system.

STA-1 Tension/Compression Load Cell



Features

- Ranges 50, 100, 200, 300kg
- Aluminium alloy construction
- Environmentally sealed to IP66
- Can be supplied complete with mating spherical rod-end bearings

Typical Applications

- Hanging scales
- Material test machines
- Engine/motor dynamometers
- General force measurement

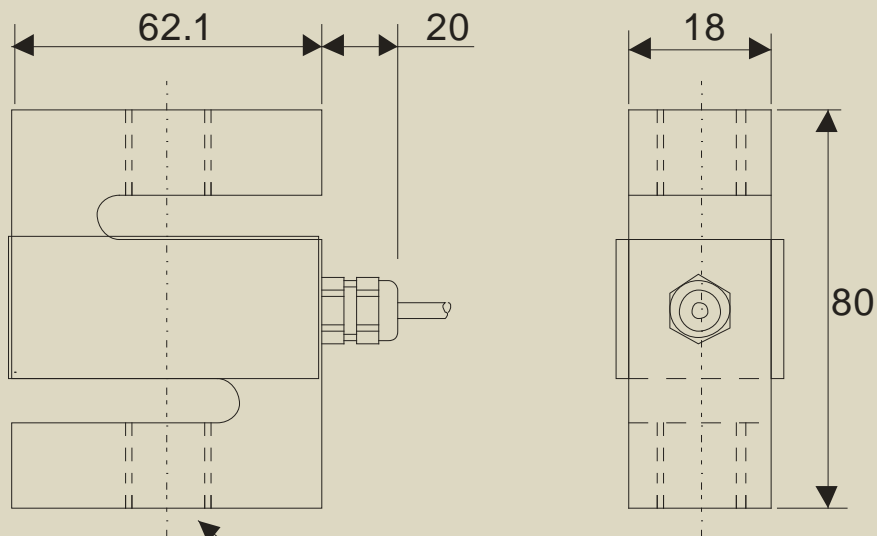
Tension/Compression Load Cell

Specification

Rated Load (kg):	50, 100, 200, 300	
Proof Load:	150% of Rated Load	
Ultimate Breaking Load:	>300% of Rated Load	
Output:	2.0 mV/V at Rated Load ($\pm 10\%$)	
Accuracy:	$< \pm 0.03\%$ of Rated Load	
Non-Repeatability:	$< \pm 0.01\%$ of Rated Load	
Excitation Voltage:	10vdc recommended, 15vdc maximum	
Bridge Resistance:	415 Ω	
Insulation Resistance:	$> 500M\Omega$ @ 100vdc	
Operating Temperature Range:	-20 to +70°C	
Compensated Temperature Range:	-10 to +40°C	
Zero Temperature Coefficient:	$< \pm 0.003\%$ of Rated Load/°C	
Span Temperature Coefficient:	$< \pm 0.002\%$ of Rated Load/°C	
Environmental Protection Level:	IP66	
Connection Type:	PVC screened cable 3m long, via cable gland	
Wiring Connections:	Red +ve supply	Blue -ve supply
	Green +ve sense	Yellow -ve sense
Options Available	Can be supplied with instrumentation Spherical seating rod end bearings Compression load button	

Mechanical Dimensions

All dimensions in millimeters



End Threads
M12 x 1.75 (both ends)

Due to continual product development, LCM Systems Ltd. reserves the right to alter product specifications without prior notice.

Issue Date: 24/9/2008

Unit 15, Newport Business Park
Barry Way, Newport, Isle of Wight, PO30 5GY
United Kingdom
Tel: +44 (0) 1983 249264
Fax: +44 (0) 1983 249266
Email: sales@lcm systems.com

LCM
SYSTEMS

www.lcm systems.com

TYPE: STA-1