

## Description

The BBL-1 series of beam load cells have been specifically designed for use in a wide range of weighing applications; including vessel weighing and floor scales. It is equally suited for use in a wide range of force measurement applications.

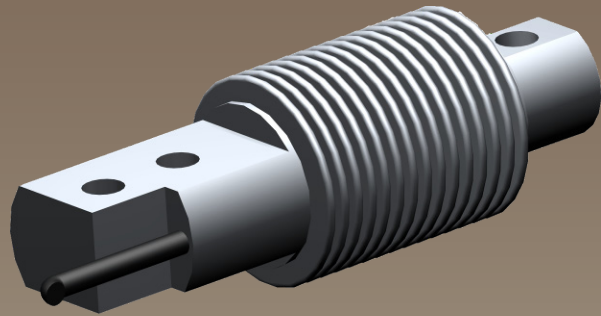
There are a number of mounting accessories, which are available to make installation easier and to ensure that the best system accuracy is maintained.

The BBL-1 series can be supplied on it's own or combined with our extensive range of instrumentation to provide a complete system.

## Typical Applications

- Vessel Weighing
- Hanging Scales
- Tensile Test Machines
- Dynamometers

## BBL-1 Beam Load Cell



## Features

- Ranges 5kg to 500kg.
- Stainless Steel Fully Welded Construction.
- Environmentally Sealed to IP68.
- Can be supplied with vessel mounting assembly or shock mounts

TYPE: BBL-1

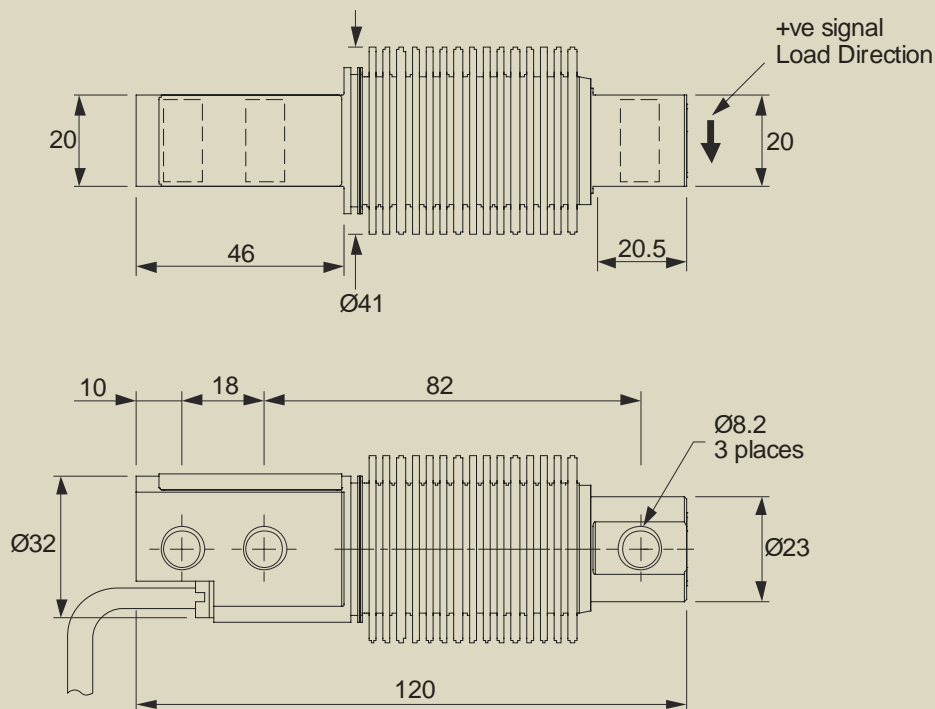
# Beam Load Cell

## Specification

Rated Load (kg):	5, 10, 20, 50, 100, 200, 500
Proof Load:	150% of Rated Load
Ultimate Breaking Load:	>300% of Rated Load
Output:	2 mV/V at Rated Load ( $\pm 10\%$ )
Accuracy:	$< \pm 0.025\%$ of Rated Load
Non-Repeatability:	$< \pm 0.020\%$ of Rated Load
Excitation Voltage:	10vdc recommended, 15vdc maximum
Bridge Resistance:	350 $\Omega$
Insulation Resistance:	>500M $\Omega$ @ 100vdc
Operating Temperature Range:	-20 to +70°C
Compensated Temperature Range:	-10 to +40°C
Zero Temperature Coefficient:	$< \pm 0.002\%$ of Rated Load/°C
Span Temperature Coefficient:	$< \pm 0.001\%$ of Rated Load/°C
Environmental Protection Level:	IP68
Connection Type:	PUR screened cable 3m long, via cable gland
Options Available:	Vessel mounting assembly Shock mounting assembly

## Mechanical Dimensions

All dimensions in millimeters



Due to continual product development, LCM Systems Ltd. reserves the right to alter product specifications without prior notice.

Issue Date: 24/9/2008

Unit 15, Newport Business Park  
Barry Way, Newport, Isle of Wight, PO30 5GY  
United Kingdom  
Tel: +44 (0) 1983 249264  
Fax: +44 (0) 1983 249266  
Email: [sales@lcmsystems.com](mailto:sales@lcmsystems.com)

**LCM**  
SYSTEMS

[www.lcmsystems.com](http://www.lcmsystems.com)

TYPE: BBL-1