

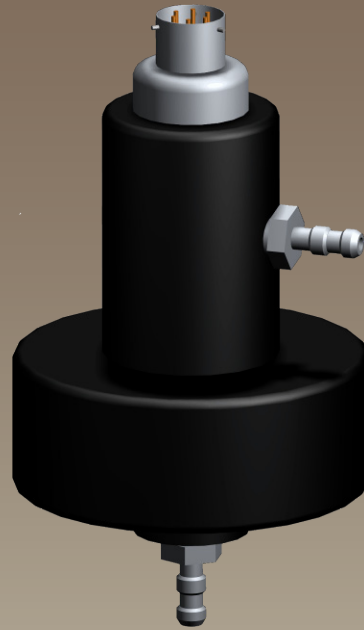


## Description

The UP series pressure transducers are well proven and widely specified for monitoring pressure in process control systems, filter efficiency monitoring and pressure measurement. When used in differential mode, the medium on the case side should be dry gas or non-conductive liquid.

LCM Systems are able to offer the UP1 with a wide range of instrumentation products, to offer a complete system. Please contact our technical department to discuss your instrumentation requirements.

# UP1 Ultra Low Range Pressure Transducer



## Features

- Range 10"WG (25mbar/0.36psi)
- Robust Housing
- Standard Wheatstone Bridge Output
- 700ohm bridge resistance
- Differential or Gauge versions
- Integral MIL-26482 Connector

## Typical Applications

- Filter condition monitoring
- Air flow simulation systems

TYPE: UP1

[www.lcm systems.com](http://www.lcm systems.com)

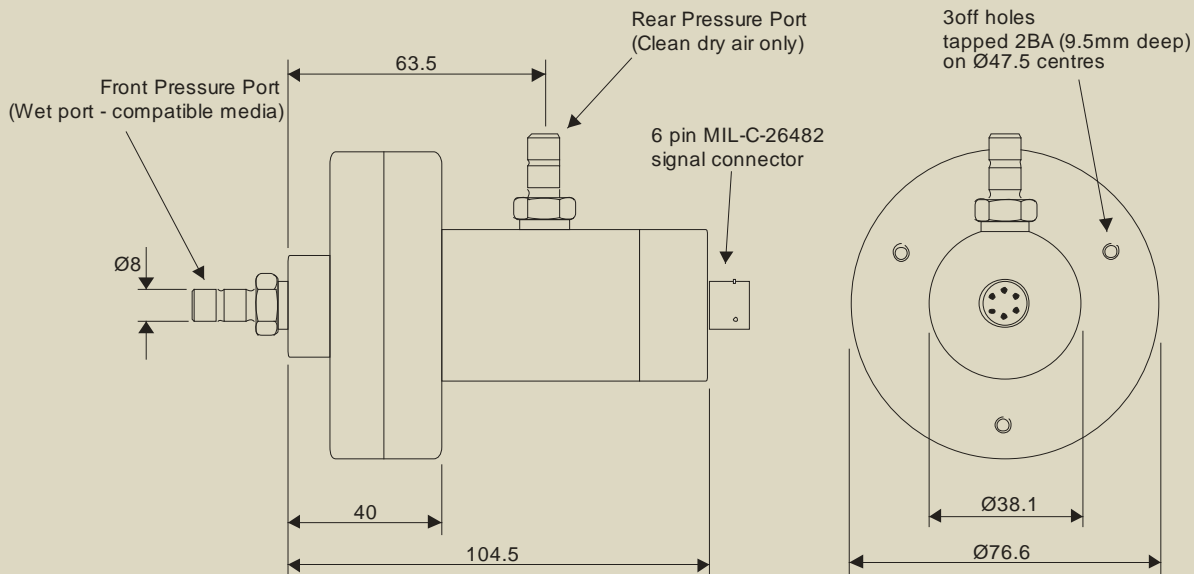
# Ultra Low Range Pressure Transducer

## Specification

Range (FSO)	$\pm 10''$ W.G ( $\pm 25$ mbar or $\pm 0.36$ psi)
Maximum Overload Range	110% FSO
Maximum Port Line Pressure	100psi (with a differential pressure not exceeding 0.36psi)
Output Sensitivity	4mV/V nominally
Zero Offset	$< \pm 2\%$ FSO
Accuracy	$< \pm 0.5\%$ FSO
Repeatability	$< \pm 0.2\%$ FSO
Excitation Voltage	10vdc maximum (5Vdc recommended)
Bridge Resistance	700 $\Omega$
Insulation Resistance	$> 100M\Omega$ at 50vdc
Operating Temperature Range	-30°C to +100°C
Compensated Temperature Range	+10°C to +60°C
Zero Temperature Coefficient	$< \pm 0.05\%$ FSO/°C
Span Temperature Coefficient	$< \pm 0.05\%$ FSO/°C
Environmental Protection Level	IP66
Connection Type	Integral MIL-C-26482 Bayonet Lock Connector
Wiring Connections:	Pin A: Positive Signal Pin B: Positive Excitation Pin C: Negative Signal Pin D: Negative Excitation

## Mechanical Dimensions

All dimensions in millimeters



Due to continual product development, LCM Systems Ltd. reserves the right to alter product specifications without prior notice.

Issue Date: 24/9/2008

Unit 15, Newport Business Park  
Barry Way, Newport, Isle of Wight, PO30 5GY  
United Kingdom  
Tel: +44 (0) 1983 249264  
Fax: +44 (0) 1983 249266  
Email: sales@lcmsystems.com

**LCM**  
SYSTEMS

www.lcmsystems.com

TYPE: UP1