

Description

The LCM range of Tension Toggle Load cells have been designed for general use and are particularly suitable for permanent installations where wire loads are being measured.

They are built to exacting standards and are suitable for use in exposed situations and can be supplied to withstand immersion in seawater.

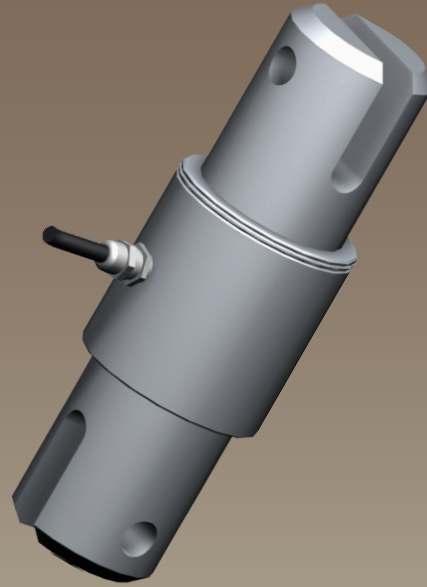
The TOG range can be supplied as shown in this datasheet or can be modified to meet a particular application requirement. We are always pleased to discuss any special requirements that can be accommodated.

The TOG series can be supplied on it's own or combined with our extensive range of instrumentation to provide a complete load monitoring system.

Typical Applications

- Structural Testing
- Mooring/Towing Monitoring
- Wire Rigging Tension Monitoring
- Wireline Measurement
- Anchor Line Tension

TOG Toggle Load Cell



Features

- Ranges 750kg to 9500kg
- Stainless Steel Construction
- Fork/Eye, Eye/Eye or Fork/Fork configuration available
- Environmentally Sealed to IP67 (IP68 can also be offered)
- Many special design options available
- Can be supplied with amplified output
- Can be supplied with integral connector

TYPE: TOG

Toggle Load Cell

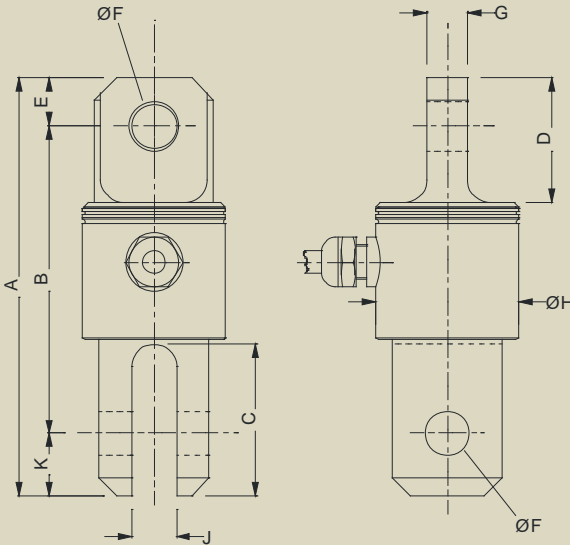
Specification

Rated Load (Kg):	750, 1500, 2000, 3250, 4750, 6500, 8500, 9500	
Proof Load:	200% of Rated Load	
Ultimate Breaking Load:	>300% of Rated Load	
Output:	1.0 mV/V at Rated Load ($\pm 10\%$)	
Accuracy:	$< \pm 0.20\%$ of Rated Load	
Non-Repeatability:	$< \pm 0.04\%$ of Rated Load	
Excitation Voltage:	10vdc recommended, 15vdc maximum	
Bridge Resistance:	350 Ω	
Insulation Resistance:	$> 500M\Omega$ @ 500vdc	
Operating Temperature Range:	-20 to +70°C	
Compensated Temperature Range:	-10 to +50°C	
Zero Temperature Coefficient:	$< \pm 0.010\%$ of Rated Load/°C	
Span Temperature Coefficient:	$< \pm 0.010\%$ of Rated Load/°C	
Environmental Protection Level:	IP67	
Connection Type:	5 metres 4-core PUR cable	
Wiring Connections:	Red +ve supply	Blue -ve supply
	Green +ve signal	Yellow -ve signal
Options Available	Special electrical connections Can be supplied with integral signal conditioning Special ranges Consult factory for any other special options	

Mechanical Dimensions

All dimensions in millimeters

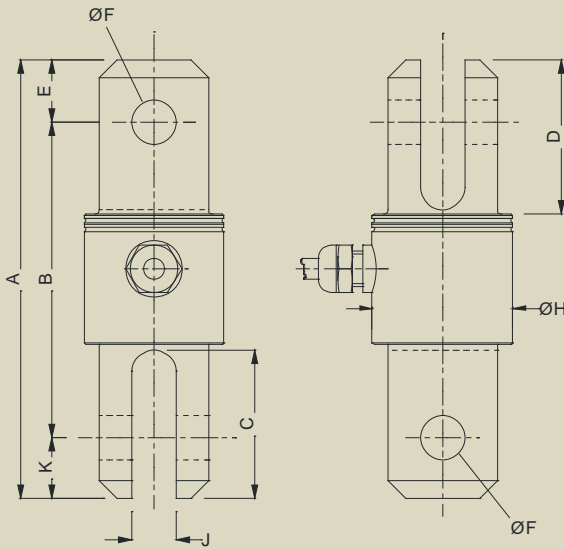
FORK/EYE CONFIGURATION



	Part Number/Range							
	TOG-375-FE 750kg	TOG-500-FE 1500kg	TOG-625-FE 2000kg	TOG-750-FE 3250kg	TOG-875-FE 4750kg	TOG-1000-FE 6500kg	TOG-1125-FE 8500kg	TOG-1250-FE 9500kg
A	100	116	173	193	218	240	280	280
B	75	84	122	135	155	170	200	200
C	34	43	68	67	80	93	112	112
D	28	35	60	60	73	80	90	90
E	11	16	20	27	32	33	38	38
ØF	10	13	16	20	23	26	29	32
G	9	12	15	19	23	24	30	30
ØH	32	32	50	50	63	63	74	74
J	10	13	16	20	23	26	30	30
K	14	16	31	31	31	37	42	42
Weight (kg)	0.3	0.4	0.7	1.5	2.1	2.8	3.4	3.7

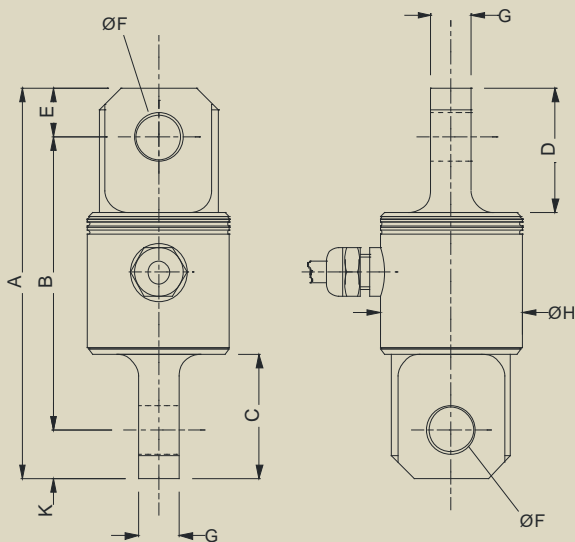
TYPE: TOG

FORK/FORK CONFIGURATION



	Part Number/Range							
	TOG-375-FF 750kg	TOG-500-FF 1500kg	TOG-625-FF 2000kg	TOG-750-FF 3250kg	TOG-875-FF 4750kg	TOG-1000-FF 6500kg	TOG-1125-FF 8500kg	TOG-1250-FF 9500kg
A	100	116	173	193	218	240	280	280
B	75	84	122	135	155	170	200	200
C	34	43	68	67	80	93	112	112
D	34	43	68	67	80	93	112	112
E	11	16	20	27	32	33	38	38
ØF	10	13	16	20	23	26	29	32
ØH	32	32	50	50	63	63	74	74
J	10	13	16	20	23	26	30	30
K	14	16	31	31	31	37	42	42
Weight (kg)	0.3	0.4	0.7	1.5	2.1	2.8	3.4	3.7

EYE/EYE CONFIGURATION



	Part Number/Range							
	TOG-375-EE 750kg	TOG-500-EE 1500kg	TOG-625-EE 2000kg	TOG-750-EE 3250kg	TOG-875-EE 4750kg	TOG-1000-EE 6500kg	TOG-1125-EE 8500kg	TOG-1250-EE 9500kg
A	100	116	173	193	218	240	280	280
B	78	84	133	139	154	174	204	204
C	28	35	60	60	73	80	90	90
D	28	35	60	60	73	80	90	90
E	11	16	20	27	32	33	38	38
ØF	10	13	16	20	23	26	29	32
G	9	12	15	19	23	24	30	30
ØH	32	32	50	50	63	63	74	74
K	11	16	20	27	32	33	38	38
Weight (kg)	0.3	0.4	0.7	1.5	2.1	2.8	3.4	3.7

Due to continual product development, LCM Systems Ltd. reserves the right to alter product specifications without prior notice.

Issue Date: 24/9/2008

Unit 15, Newport Business Park
Barry Way, Newport, Isle of Wight, PO30 5GY
United Kingdom
Tel: +44 (0) 1983 249264
Fax: +44 (0) 1983 249266
Email: sales@lcmsystems.com

