

## Description

The LCM series of Load Monitoring Links have been designed for lifting and weighing in rugged or harsh environments, being manufactured from entirely from Stainless Steel.

The TLL series are simple to install and are matched to standard shackle sizes. The links are normally supplied with a MIL specification plug and socket; the whole package is environmentally sealed to IP66.

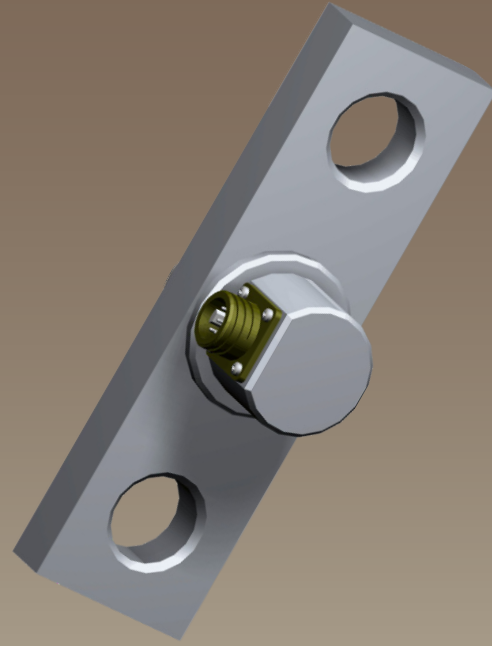
The TLL series can be supplied as shown in this datasheet or can be modified to meet a particular application requirement. We are always pleased to discuss any special requirements that can be accommodated.

The TLL series can be supplied on it's own or combined with our extensive range of instrumentation to provide a complete load monitoring system.

## Typical Applications

- Cable Tension Monitoring
- Under-hook Hoist and Crane Weighing
- Towing/Mooring Tension
- Crane Safe Load Monitoring

## TLL Load Monitoring Link



## Features

- Ranges 5tonne to 100tonne
- Stainless Steel construction
- Environmentally Sealed to IP66 (IP67 can also be offered)
- Special Sizes and ranges available
- Higher Range versions available
- Amplified output version available
- Ideally suited to be supplied calibrated with TR150 or TR200 battery powered indicators

TYPE: TLL

[www.lcmsystems.com](http://www.lcmsystems.com)

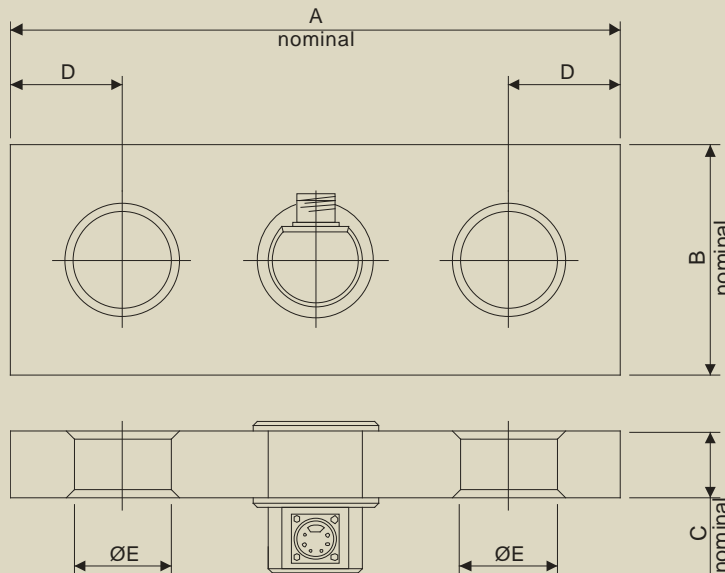
# Load Monitoring Link

## Specification

Rated Load (tonne):	5, 10, 20, 25, 30, 40, 50, 100		
Proof Load:	150% of Rated Load		
Ultimate Breaking Load:	>300% of Rated Load		
Output:	1.5 mV/V at Rated Load ( $\pm 10\%$ )		
Accuracy:	$< \pm 0.25\%$ of Rated Load		
Non-Repeatability:	$< \pm 0.04\%$ of Rated Load		
Excitation Voltage:	10vdc recommended, 15vdc maximum		
Bridge Resistance:	350 $\Omega$		
Insulation Resistance:	$> 500M\Omega$ @ 500vdc		
Operating Temperature Range:	-20 to +70°C		
Compensated Temperature Range:	-10 to +50°C		
Zero Temperature Coefficient:	$< \pm 0.010\%$ of Rated Load/°C		
Span Temperature Coefficient:	$< \pm 0.010\%$ of Rated Load/°C		
Environmental Protection Level:	IP66 (IP67 optional)		
Connection Type:	5 metres 4-core PUR cable		
Wiring Connections:	Red +ve supply	Blue -ve supply	
	Green +ve signal	Yellow -ve signal	
Options Available	Special ranges and sizes available Can be supplied complete with shackles Can be supplied with integral signal conditioning Optional complete carry kit, including indicator      Special electrical connections		

## Mechanical Dimensions

All dimensions in millimeters



	Part Number/Range							
	TLL-05 5 tonne	TLL-10 10 tonne	TLL-20 20 tonne	TLL-25 25 tonne	TLL-30 30 tonne	TLL-40 40 tonne	TLL-50 50 tonne	TLL-100 100 tonne
<b>A</b>	230	260	330	330	370	420	430	480
<b>B</b>	75	75	100	100	125	140	140	166
<b>C</b>	25	25	40	40	40	50	50	69
<b>D</b>	37.5	40	60	60	67.5	79	77.5	101
<b>ØE</b>	Ø27	Ø38	Ø53	Ø53	Ø59	Ø72	Ø72	Ø84
<b>Weight (kg)</b>	2.5	3	7.5	7.5	12	15	18	37

Due to continual product development, LCM Systems Ltd. reserves the right to alter product specifications without prior notice.

Issue Date: 24/9/2008

Unit 15, Newport Business Park  
 Barry Way, Newport, Isle of Wight, PO30 5GY  
 United Kingdom  
 Tel: +44 (0) 1983 249264  
 Fax: +44 (0) 1983 249266  
 Email: sales@lcmsystems.com



TYPE: TLL

www.lcmsystems.com