

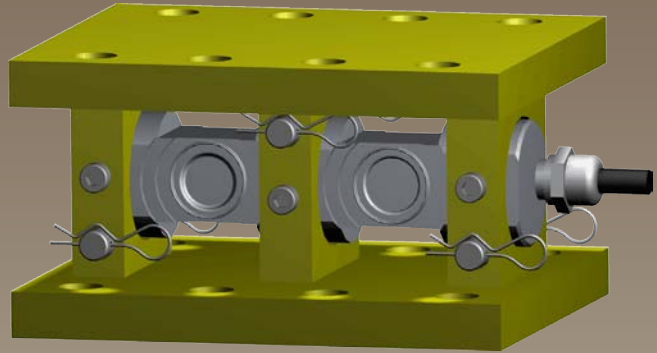
Description

The SWA-1 series of products uses a stainless steel double ended shear beam design, sealed to IP68 and is supplied as a complete assembly with mounting brackets. The mounting bracket assembly enables simple mounting for the engineer on site. It incorporates a number of key features that enables the best-installed accuracy to be realised. These include anti-lift off mechanism, compensation for thermal expansion and off-axis loading.

The SWA-1 is available in 5 different sizes (full details shown on the reverse of this data sheet). The standard mounting assembly is of a painted alloy steel construction, with a stainless steel option available for food, hygienic or corrosive applications.

The SWA-1 series can be supplied on it's own or combined with our extensive range of instrumentation to provide a complete monitoring or control system.

SWA-1 DSB Silo Weighing Assembly



Features

- Ranges 0.5, 1, 2, 5, 7.5, 10, 15, 20, 30, 50, 75, 100, 120 tonne
- Stainless steel fully welded construction
- Environmentally sealed to IP68
- Painted Alloy Steel mounting assembly (stainless steel option also available)
- High Accuracy
- Low Height
- Anti-Lift Off Mechanism
- Integral earth strap
- High Resistance to off-axis loading

Typical Applications

- Vessel weighing
- Silo weighing
- Process weighing & control
- Tank weighing

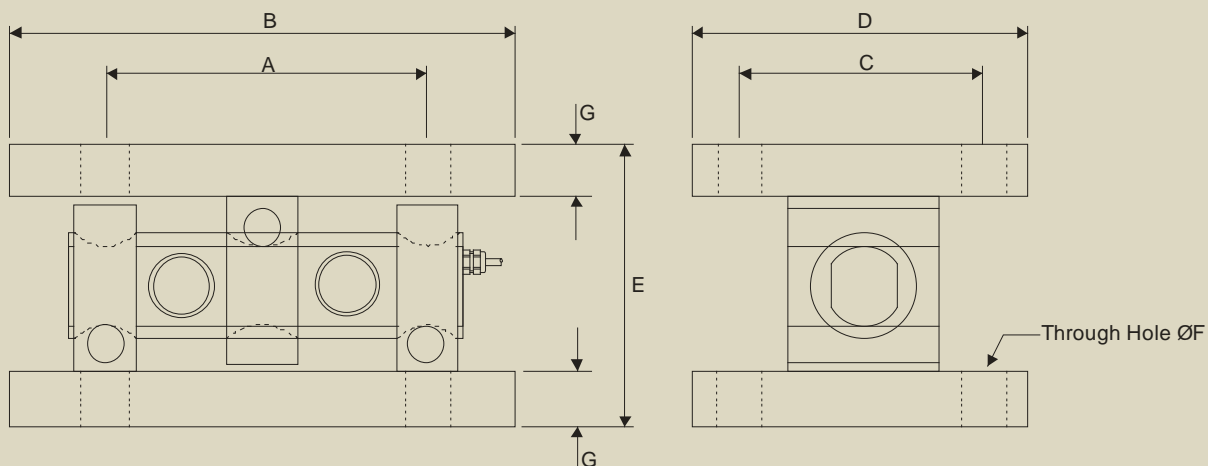
DSB Silo Weighing Assembly

Specification

Rated Load (tonnes):	0.5, 1, 2, 5, 7.5, 10, 15, 20, 30, 50, 75, 100, 120		
Proof Load:	150% of Rated Load		
Ultimate Breaking Load:	>300% of Rated Load		
Output:	2.0 mV/V at Rated Load ($\pm 0.2\%$)		
Accuracy:	< $\pm 0.05\%$ of Rated Load		
Non-Repeatability:	< $\pm 0.01\%$ of Rated Load		
Excitation Voltage:	10vdc recommended, 15vdc maximum		
Bridge Resistance:	750 Ω Input, 700 Ω Output		
Insulation Resistance:	>500M Ω @ 100vdc		
Operating Temperature Range:	-20 to +70°C		
Compensated Temperature Range:	-10 to +50°C		
Zero Temperature Coefficient:	< $\pm 0.005\%$ of Rated Load/°C		
Span Temperature Coefficient:	< $\pm 0.005\%$ of Rated Load/°C		
Environmental Protection Level:	IP68		
Connection Type:	PUR screened cable 10m long, via cable gland		
Wiring Connections:	Red +ve supply	Blue -ve supply	
	Green +ve signal	Yellow -ve signal	
Options Available	Stainless steel mounting assembly		

Mechanical Dimensions

All dimensions in millimeters



	RATED LOAD	A	B	C	D	E	ØF	G
SIZE 1	0.5, 1, 2, 5 tonne	105	150	94	124	88	Ø13.5	14
SIZE 2	7.5, 10, 15, 20 tonne	140	200	125	165	115	Ø17.5	18
SIZE 3	10, 15, 20, 30, 50, 75 tonne	175	280	175	230	160	Ø22	25
SIZE 4	100 tonne	240	300	190	250	182	Ø26	25
SIZE 5	120 tonne	250	320	230	300	202	Ø26	28

Due to continual product development, LCM Systems Ltd. reserves the right to alter product specifications without prior notice.

Issue Date: 24/9/2008

Unit 15, Newport Business Park
Barry Way, Newport, Isle of Wight, PO30 5GY
United Kingdom
Tel: +44 (0) 1983 249264
Fax: +44 (0) 1983 249266
Email: sales@lcm systems.com

LCM
SYSTEMS

www.lcm systems.com

TYPE: SWA-1