

Description

The STA-2 series load cell is ideal for measuring both tensile and compressive forces. The standard metric threads at each end of the load cell are designed to accept standard spherical seating rod-end bearing.

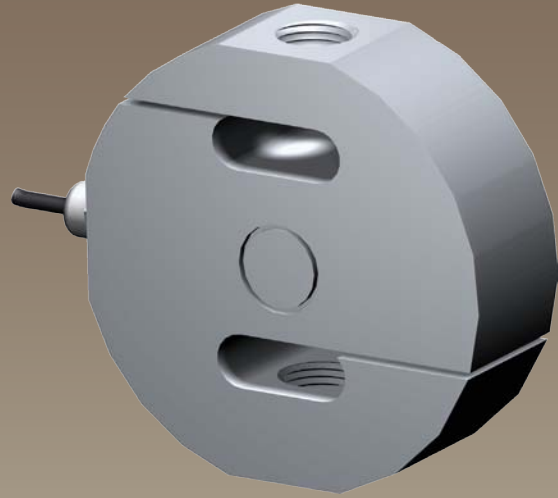
The STA-2 is suitable for many applications where a tension and compression load cell is required, for high accuracy measurements. Applications such as vessel weighing, material test machines and dynamometers are a few examples.

The STA-2 series can be supplied on its own or combined with our extensive range of instrumentation to provide a complete load monitoring system.

Typical Applications

- Vessel weighing
- Hanging scales
- Multipoint structural weighing
- Material/tensile test machines
- General force measurement

STA-2 Tension/Compression Load Cell



Features

- Ranges 250, 500, 1000, 2000, 5000, 10000, 20000kg
- Stainless steel fully welded construction
- Environmentally sealed to IP68
- Can be supplied complete with mating spherical rod-end bearings

TYPE: STA-2

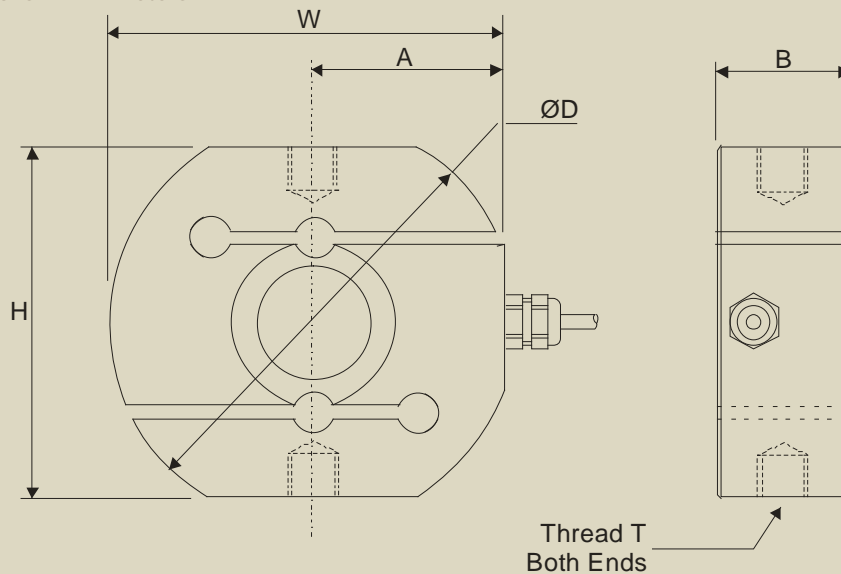
Tension/Compression Load Cell

Specification

Rated Load (kg):	250, 500, 1000, 2000, 5000, 10000, 20000		
Proof Load:	150% of Rated Load		
Ultimate Breaking Load:	>300% of Rated Load		
Output:	2.0 mV/V at Rated Load ($\pm 0.2\%$)		
Accuracy:	< $\pm 0.03\%$ of Rated Load		
Non-Repeatability:	< $\pm 0.01\%$ of Rated Load		
Excitation Voltage:	10vdc recommended, 15vdc maximum		
Bridge Resistance:	350 Ω		
Insulation Resistance:	>500M Ω @ 100vdc		
Operating Temperature Range:	-20 to +70°C		
Compensated Temperature Range:	-10 to +40°C		
Zero Temperature Coefficient:	< $\pm 0.002\%$ of Rated Load/°C		
Span Temperature Coefficient:	< $\pm 0.002\%$ of Rated Load/°C		
Environmental Protection Level:	IP68		
Connection Type:	PVC screened cable 3m long, via cable gland		
Wiring Connections:	Red +ve supply	Blue -ve supply	
	Green +ve signal	Yellow -ve signal	
Options Available	Can be supplied with instrumentation Spherical seating rod end bearings Compression load button		

Mechanical Dimensions

All dimensions in millimeters



Part Number/Range	A	W	H	B	ØD	Thread T
STA-2-250	35	72.5	70	24.5	Ø75	M12 x 1.75
STA-2-500	35	72.5	70	24.5	Ø75	M12 x 1.75
STA-2-1000	45	95	95	30	Ø100	M20 x 1.5
STA-2-2000	45	95	95	30	Ø100	M20 x 1.5
STA-2-5000	57.5	120	120	40	Ø125	M24 x 2
STA-2-10000	65	141	145	55	Ø152	M30 x 2
STA-2-20000	88	188	190	70	Ø200	M45 x 3

Due to continual product development, LCM Systems Ltd. reserves the right to alter product specifications without prior notice.

Issue Date: 24/9/2008

Unit 15, Newport Business Park
Barry Way, Newport, Isle of Wight, PO30 5GY
United Kingdom
Tel: +44 (0) 1983 249264
Fax: +44 (0) 1983 249266
Email: sales@lcm systems.com

LCM
SYSTEMS

www.lcm systems.com

TYPE: STA-2