

## Description

The SPB-1 is a low range anodised aluminium alloy single point load cells, which has been specifically designed for platform weighing applications, although it is equally suited to other weighing and force measurement applications where high accuracy is required from a low range product.

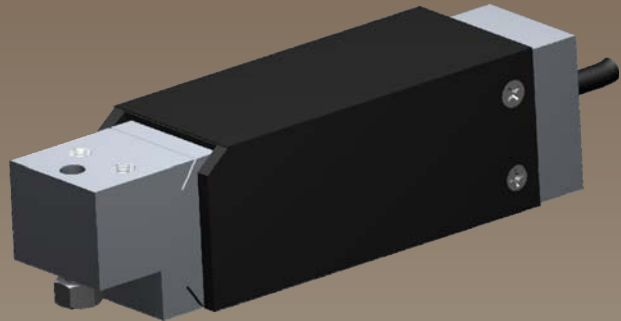
The SPB-1 is suitable for use in platforms with sizes up to 350mm x 350mm, which in combination with its low selling price makes it highly attractive for a number of weighing applications. It is environmentally sealed as standard to IP65, with an option to upgrade the sealing to IP67.

The SPB-1 series can be supplied on its own or combined with our extensive range of instrumentation to provide a complete load monitoring system.

## Typical Applications

- Platform weighing
- High accuracy force measurement
- Web tension measurement

## SPB-1 Low Range Single Point Load Cell



## Features

- Ranges 2, 3, 5, 7, 10, 15kg
- Anodised aluminium construction
- Environmentally sealed to IP65 (IP67 can also be offered)
- High accuracy
- Suitable for use in platforms, maximum size 350mm x 350mm
- Integral mechanical overload stops included as standard

TYPE: SPB-1

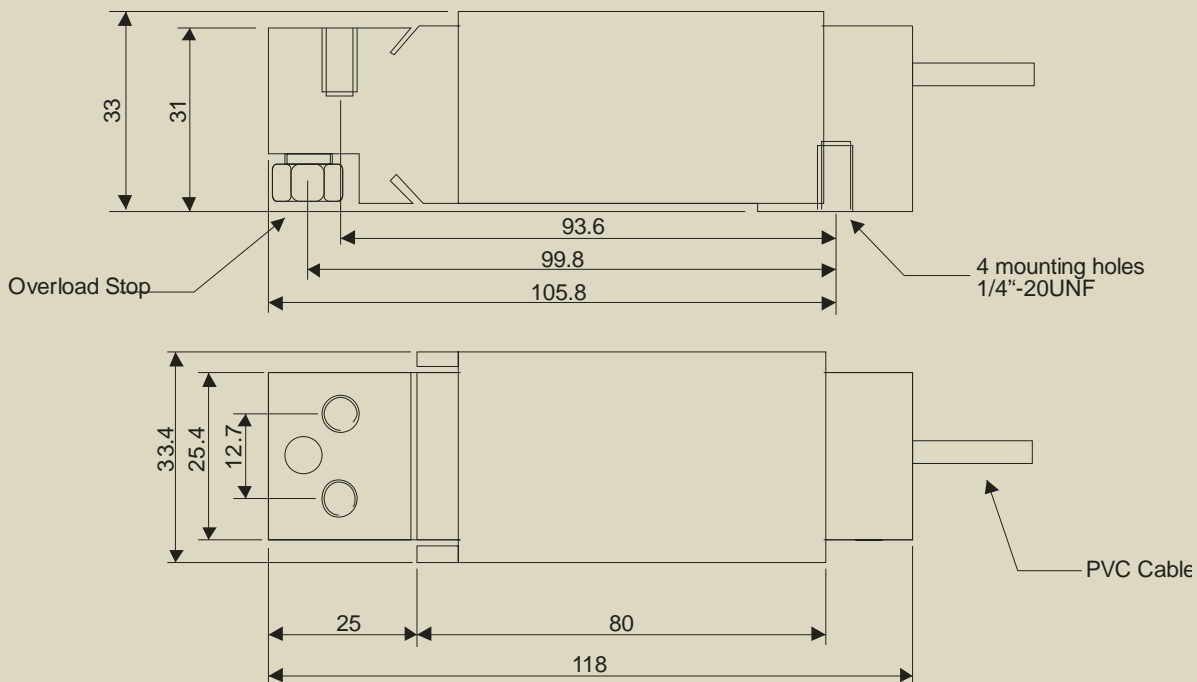
# Low Range Single Point Load Cell

## Specification

Rated Load (kg):	2, 3, 5, 7, 10, 15	
Proof Load:	150% of Rated Load	
Ultimate Breaking Load:	300% of Rated Load	
Output:	2.0 mV/V at Rated Load ( $\pm 10\%$ )	
Accuracy:	$< \pm 0.02\%$ of Rated Load (typically)	
Non-Repeatability:	$< \pm 0.01\%$ of Rated Load	
Excitation Voltage:	10vdc recommended, 15vdc maximum	
Bridge Resistance:	415 $\Omega$	
Insulation Resistance:	$> 500\text{M}\Omega$ @ 100vdc	
Operating Temperature Range:	-20 to +70°C	
Compensated Temperature Range:	-10 to +40°C	
Zero Temperature Coefficient:	$< \pm 0.01\%$ of Rated Load/°C	
Span Temperature Coefficient:	$< \pm 0.003\%$ of Rated Load/°C	
Environmental Protection Level:	IP65 (IP67 optional)	
Connection Type:	PVC screened cable 1m long	
Wiring Connections:	Green +ve supply	Black -ve supply
	Blue +ve sense	Brown -ve sense
	Red +ve signal	White -ve signal
Options Available	Can be supplied with instrumentation Sealing to IP67	

## Mechanical Dimensions

All dimensions in millimeters



Due to continual product development, LCM Systems Ltd. reserves the right to alter product specifications without prior notice.

Issue Date: 20/03/2009

Unit 15, Newport Business Park  
Barry Way, Newport, Isle of Wight, PO30 5GY  
United Kingdom  
Tel: +44 (0) 1983 249264  
Fax: +44 (0) 1983 249266  
Email: sales@lcmsystems.com

**LCM**  
SYSTEMS

www.lcmsystems.com

TYPE: SPB-1