

Description

The LCM range of Shackle Load Cells is designed for lifting and weighing in rugged or harsh environments.

The shackle pins are forged from high tensile carbon steel and are machined to an exacting specification. The basic shackle uses the Crosby G2130 (1-25tonne) and G2140 (40-400tonne).

This range of load cells is Proof Loaded to 150% of the normal rated load.

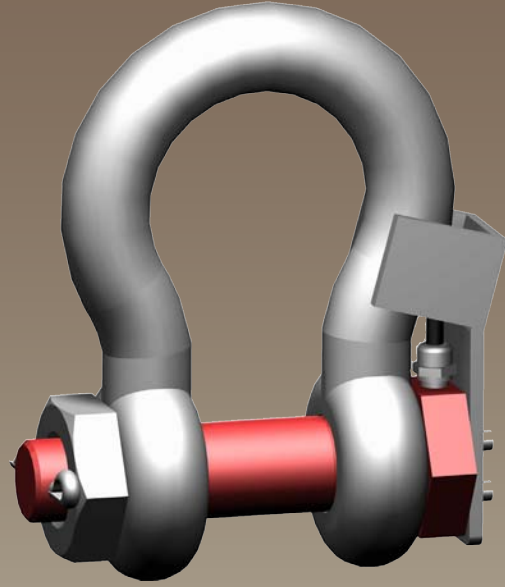
The SHK-B series are available in a range from 1 tonne to 400 tonne. The integral cable is normally enclosed in an armoured rubber hydraulic hose to give physical and environmental protection. The SHK-B is internally gauged and the whole instrumented area is sealed to IP66, to protect it in service.

They are simple to install and are available in standard shackle sizes. As an option, a rotating bobbin can be supplied, to centralise the load and to minimise any point-load effects when the shackle is placed under load. We are always pleased to discuss any special requirements that can be accommodated. The SHK-B series can be supplied on it's own or combined with our extensive range of instrumentation to provide a complete load monitoring system.

Typical Applications

- Under-hook Hoist/Crane Weighing
- Cable Tension Monitoring
- Towing/Mooring Tension
- Crane Safe Load Monitoring

SHK-B Shackle Load Cell

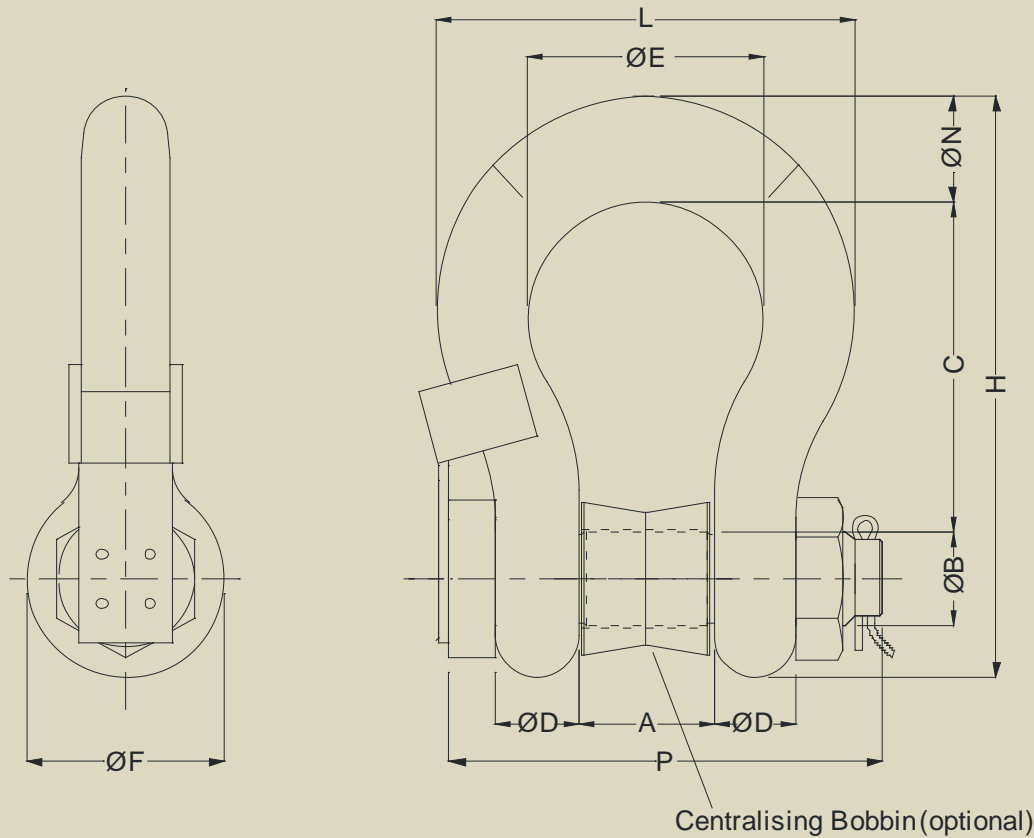


Features

- Ranges 1tonne to 400tonne
- High Tensile Carbon Steel Construction
- Environmentally Sealed to IP66 (IP67 can also be offered)
- Simple installation and operation
- Shackle and load pin fully certified
- Optional load centralising bobbin
- Can be supplied with amplified output
- Many other options available

Mechanical Dimensions

All dimensions in millimeters



Centralising Bobbin (optional)

Model	Range (tonne)	A	ØB	C	ØD	ØE	ØF	H	L	N	P	Weight (kg)
SHK-B-1	1	16.8	11.2	36.6	9.65	26.2	23.1	63.0	45.2	9.65	55.0	2
SHK-B-2	2	20.6	16.0	47.8	12.7	33.3	30.2	83.5	58.5	12.7	71.0	2.3
SHK-B-3.25	3¼	26.9	19.1	60.5	16.0	42.9	38.1	106	74.5	17.5	89.5	2.8
SHK-B-4.75	4¾	31.8	22.4	71.5	19.1	51.0	46.0	126	89.0	20.6	103	3
SHK-B-6.5	6½	36.6	25.4	84.0	22.4	58.0	53.0	148	102	24.6	120	3.2
SHK-B-9.5	9½	46.0	31.8	108	28.7	74.0	68.5	190	131	31.8	150	5.2
SHK-B-12	12	51.5	35.1	119	31.8	82.5	76.0	210	146	35.1	165	8
SHK-B-17	17	60.5	41.4	146	38.1	98.5	92.0	254	175	41.1	196	12
SHK-B-25	25	73.0	51.0	178	44.5	127	106	313	225	57.0	230	18
SHK-B-40	40	73.0	51.0	178	44.5	127	106	313	225	57.0	230	18
SHK-B-55	55	82.5	57.0	197	51.0	146	122	348	253	61.0	264	25
SHK-B-85	85	105	70.0	267	66.5	184	145	453	327	79.0	344	45
SHK-B-120	120	127	82.5	330	76.0	200	165	546	365	92.0	419	85
SHK-B-150	150	133	95.5	372	95.5	229	203	625	419	105	483	125
SHK-B-200	200	184	121	397	95.5	279	267	743	533	152	521	215
SHK-B-300	300	213	152	495	121	330	305	895	635	172	618	364
SHK-B-400	400	210	178	572	165	330	356	1022	660	184	710	520

Due to continual product development, LCM Systems Ltd. reserves the right to alter product specifications without prior notice.

Issue Date: 24/9/2008

Unit 15, Newport Business Park
Barry Way, Newport, Isle of Wight, PO30 5GY
United Kingdom
Tel: +44 (0) 1983 249264
Fax: +44 (0) 1983 249266
Email: sales@lcmsystems.com

LCM
SYSTEMS

TYPE: SHK-B

www.lcmsystems.com