



Description

The SBL-2 series of shear beam load cells has been specifically designed for use in a wide range of weighing applications; including vessel weighing, floor scales and pallet trucks.

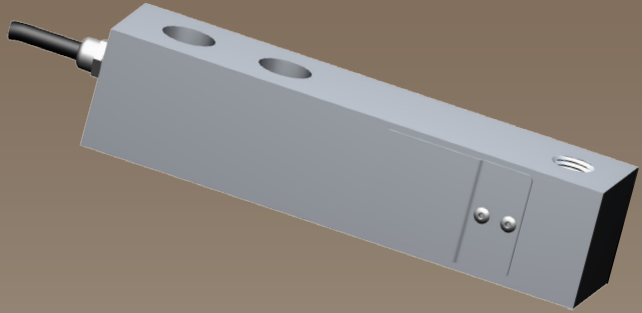
There are a number of mounting accessories, which are available to make installation easier and to ensure that the best system accuracy is maintained.

The SBL-2 series can be supplied on it's own or combined with our extensive range of instrumentation to provide a complete system.

Typical Applications

- Vessel weighing
- Floor scales
- Rolling roads
- MOT Brake testers

SBL-2 Shear Beam Load Cell



Features

- Ranges 250, 500, 1000, 2000kg.
- Alloy Steel Nickel Plated Construction.
- Environmentally Sealed to IP67.
- Can be supplied with vessel mounting assembly, shock mounts or platform foot mounting assembly.

TYPE: SBL-2

www.lcmsystems.com

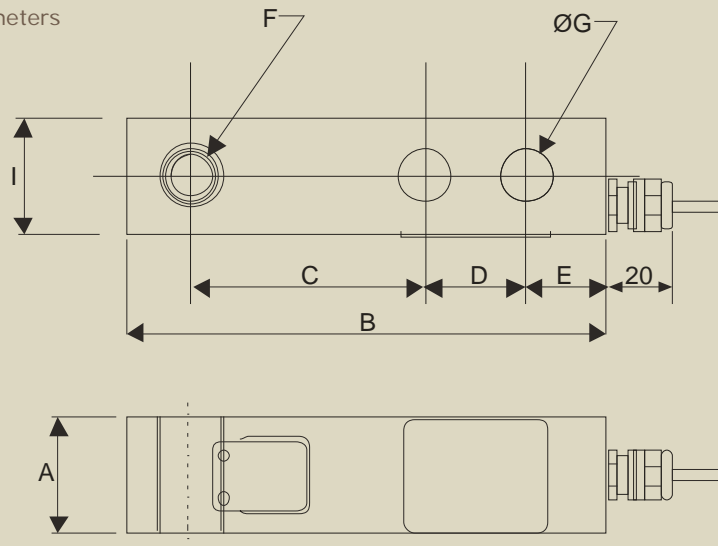
Shear Beam Load Cell

Specification

Rated Load (kg):	250, 500, 1000, 2000
Proof Load:	150% of Rated Load
Ultimate Breaking Load:	>300% of Rated Load
Output:	2 mV/V at Rated Load ($\pm 0.1\%$)
Accuracy:	$< \pm 0.02\%$ of Rated Load
Non-Repeatability:	$< \pm 0.01\%$ of Rated Load
Excitation Voltage:	10vdc recommended, 15vdc maximum
Bridge Resistance:	350 Ω
Insulation Resistance:	>500M Ω @ 100vdc
Operating Temperature Range:	-20 to +70°C
Compensated Temperature Range:	-10 to +40°C
Zero Temperature Coefficient:	$< \pm 0.001\%$ of Rated Load/°C
Span Temperature Coefficient:	$< \pm 0.003\%$ of Rated Load/°C
Environmental Protection Level:	IP67
Connection Type:	PUR screened cable 5m long, via cable gland
Options Available:	Vessel mounting assembly Shock mounting assembly Platform foot mounting assembly Stainless Steel Versions

Mechanical Dimensions

All dimensions in millimeters



	250, 500, 1000kg	2000kg
A	30.5	36
B	130	130
C	76.2	76.2
D	25.4	25.4
E	16	16
F	M12 x 1.75 or c'bored Ø13.5 x 14.5 deep	M12 x 1.75 or c'bored Ø13.5 x 14.5 deep
ØG	13.5	13.5
I	30.5	30.5

Due to continual product development, LCM Systems Ltd. reserves the right to alter product specifications without prior notice.

Issue Date: 24/9/2008

Unit 15, Newport Business Park
Barry Way, Newport, Isle of Wight, PO30 5GY
United Kingdom
Tel: +44 (0) 1983 249264
Fax: +44 (0) 1983 249266
Email: sales@lcmsystems.com

LCM
SYSTEMS

www.lcmsystems.com

TYPE: SBL-2