



Description

The SBL-AV anti-vibration mounting assembly has been designed to assist with the damping of high frequency vibrations, which may be present in some weighing applications.

The SBL-AV helps “damp” these high frequency oscillations to help improve overall system accuracy and settling times.

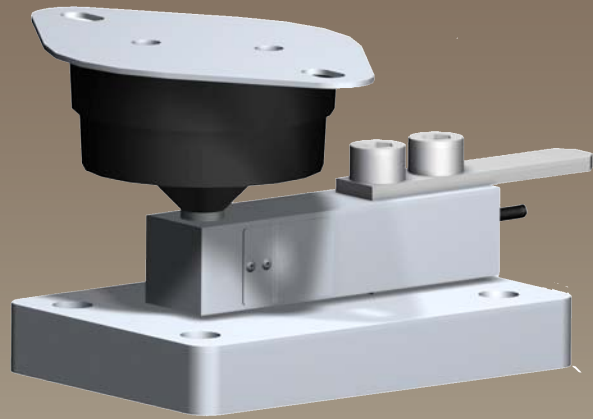
The SBL-AV can be supplied as an accessory for use with the SBL-1, SBL-2 or SBL-3 series of shear beam load cells.

Please contact LCM Systems technical department to discuss any assistance you may need with the specification of the correct load cell and mounting arrangement for your application.

Typical Applications

- Conveyor Weighing
- Mixer Batching Plants
- Rotating machinery Weighing

SBL-AV Shear Beam Anti-Vibration Mounting Assembly



Features

- Minimise vibration effects
- Plated steel for maximum protection
- Suitable for SBL-1, SBL-2 & SBL-3 load cells (Capacities $\leq 2000\text{kg}$)
- Simple Installation

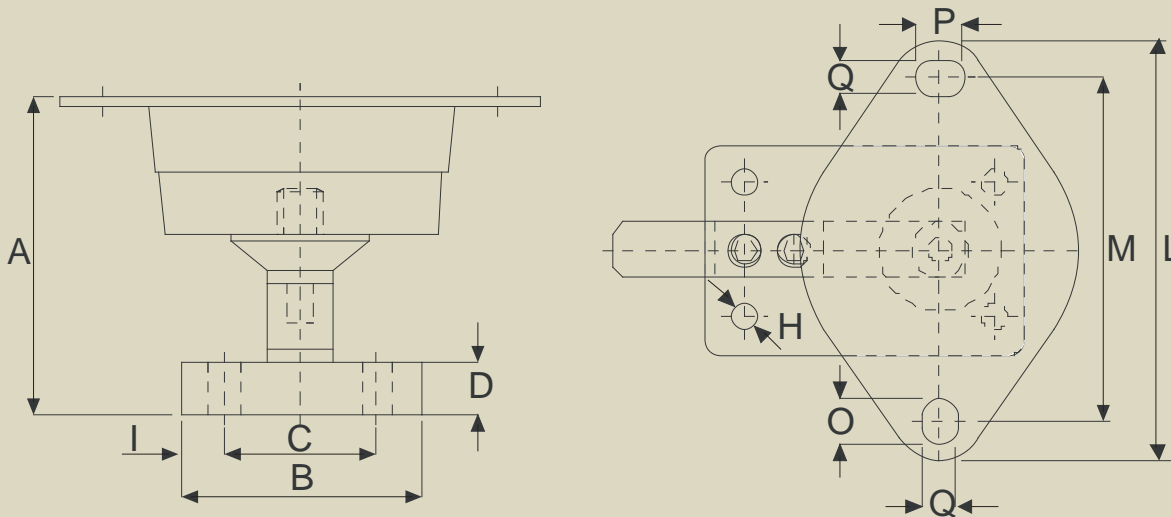
TYPE: SBL-AV

www.lcmsystems.com

Shear Beam Anti-Vibration Mounting Assembly

Mechanical Dimensions

All dimensions in millimeters



250kg to 2000kg	A	B	C	D	E	F	G	H	Flange Thickness
	146	110	70	24	130	165	20	14.0	5
	I	L	M	N	O	P	Q	R	
20	220	180	146	24	26	18	106		

Due to continual product development, LCM Systems Ltd. reserves the right to alter product specifications without prior notice.

Issue Date: 24/9/2008

Unit 15, Newport Business Park
Barry Way, Newport, Isle of Wight, PO30 5GY
United Kingdom
Tel: +44 (0) 1983 249264
Fax: +44 (0) 1983 249266
Email: sales@lcmsystems.com

LCM
SYSTEMS

www.lcmsystems.com

TYPE: SBL-AV