

Description

The PD13 replaces the PD20 range of displacement transducers, as previously manufactured by Pioden Controls (which is now part of LCM Systems).

The PD13 offers many benefits over the PD20, including, low noise, greater resolution and improved availability.

The PD13 covers a wide range of options covering 25mm to 200mm strokes. They are used in many applications, including research laboratories, winding machines, civil engineering and motorsport.

The simple circuit arrangement for this type of sensor makes them ideal for OEM applications as well as lower volume special applications.

A wide range of supporting instrumentation is available. Please consult LCM Systems for further details.

Typical Applications

- Force/displacement Test Rigs
- Curtain Walls
- Winding Machines
- Hydraulic Position Control

PD13 Linear Displacement Transducer



Features

- Body Diameter $\varnothing 13\text{mm}$
- Simple voltage divider operation
- Life at 250mm per second is greater than 100 million operations
- 1 metre long cable (extension cable options are available)
- Sealing to IP50 (IP66 optional)

TYPE: PD13

www.lcmsystems.com

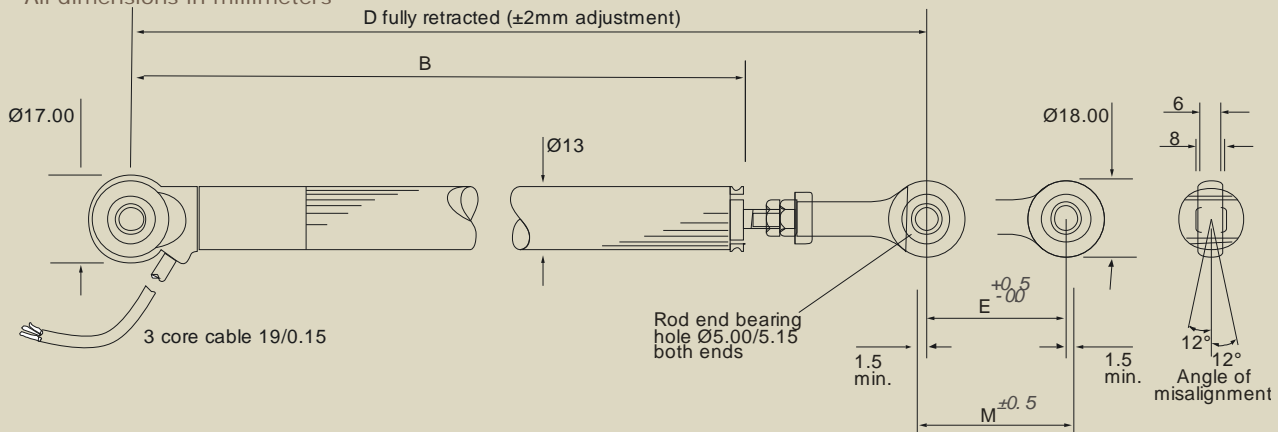
Linear Displacement Transducer

Specification

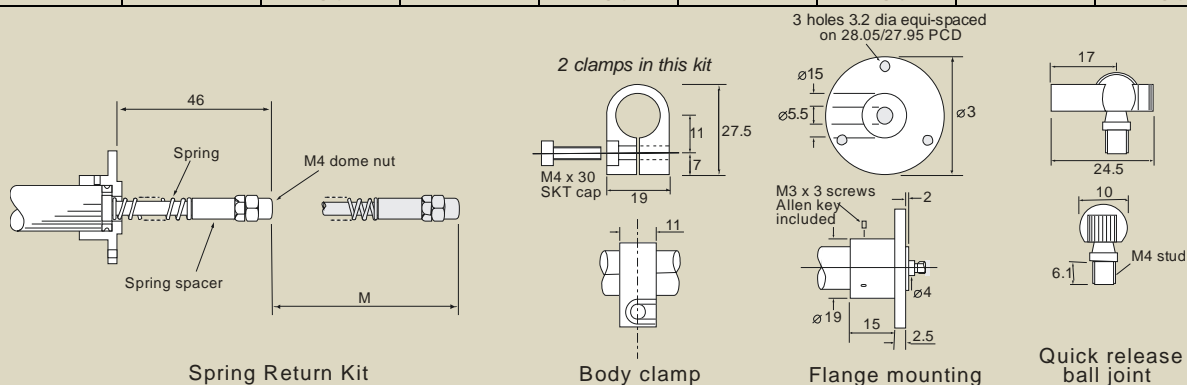
Electrical Stroke :	mm	25	50	75	100	125	150	175	200
Resistance:	k Ω	1	2	3	4	5	6	7	8
Linearity:	$\pm\%$	0.25	0.25	0.15	0.15	0.15	0.15	0.15	0.15
Power Dissipation:	watts	0.5	1.0	1.5	2.0	2.5	3.0	3.5	4.0
Maximum Supply Voltage:	Vdc	22	44	67	74	74	74	74	74
Electrical Output:	0.5% to 99.5% of supply voltage								
Resolution:	Infinite								
Hysteresis & Repeatability:	<0.1mm								
Operating Temperature:	-30°C to +100°C								
Insulation Resistance:	>100M Ω at 500Vdc								
Wiper Circuit Impedance:	100 times Resistance or 500k Ω , whichever is greater								
Electrical Connections:	3 core PUR 19/0.15 cable, 1 metre long								
Options Available:	Extension Cables								
	Quick Release Ball Joint								
	Spring Return (not available for 200mm version)								
	Body Clamp Kit								
	Dome Nut								
	Flange Clamp Kit								

Mechanical Dimensions

All dimensions in millimeters



	25mm	50mm	75mm	100mm	125mm	150mm	175mm	200mm
B	110.5	135.5	160.5	185.5	210.5	235.5	260.5	285.5
D	173.6	198.6	223.6	248.6	273.6	298.6	323.6	348.6
E	25	50	75	100	125	150	175	200
M	29	54	79	104	129	154	179	204



Due to continual product development, LCM Systems Ltd. reserves the right to alter product specifications without prior notice.

Issue Date: 24/9/2008

Unit 15, Newport Business Park
Barry Way, Newport, Isle of Wight, PO30 5GY
United Kingdom
Tel: +44 (0) 1983 249264
Fax: +44 (0) 1983 249266
Email: sales@lcmsystems.com

LCM
SYSTEMS