

Description

The function of the DSJ1 is to enable the easy connection of a load cell and a DSC Card for communications to a PC or PLC.

Designed to take one DSC Card in a single enclosure, the DSJ1 offers a convenient and practical solution to the installation of digital load cells with platforms, silos and any weighing systems where connection to PC and PLC's is an essential requirement of the system.

Supplied as an OEM device on a single 135 x 73mm PCB, it has options for fitting in an IP65 ABS Case, or to a DIN rail fixture.

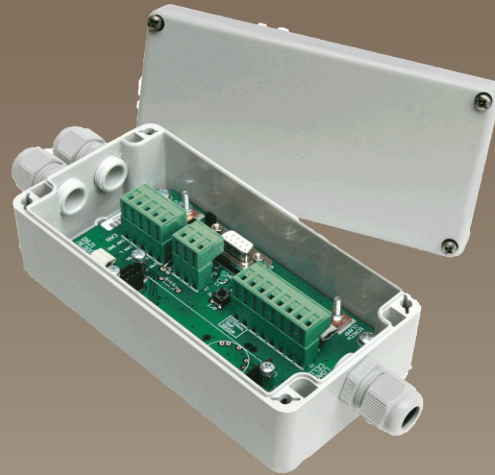
When a DSC card is fitted to the DSJ1 PCB it will enable the connection of a load cell via a two-part connector, with a five-way two-part connector for the communications output and a D type 9 pin connector, as well as connections for digital inputs and outputs and external temperature sensor.

The communications output connection is RS232, RS485 or CAN depending on the DSC unit used.

Typical Applications

- Vessel Weighing
- Cable tension measurement
- Conveyor weighing
- Force transfer standard interface

DSJ1 Single Channel DSC Docking Station



Features

- Bus connections for communication and power supply
- Removable field wireable terminals
- D type 9 pin connector for easy communications connection
- Green LED power indicator
- Red LED digital output indicator
- Push switch to simulate digital input
- Option to terminate bus through 120 ohm resistor
- CAN compliant
- 3 x screen clamps for EMC termination

Single Channel DSC Docking Station

Specification

Connections	1 x 8 way 2 part terminal for load cell and temperature sensor connections (2.5mm ² cable max) 1 x 5 way 2 part terminal for Digital Data and Power (2.5mm ² cable max) 1 x 3 way 2 part terminal for DSC digital I/O 1 x 9 way D type connector for digital data
Dimensions	135 x 73 x 18mm PCB only
Enclosure Material	Sealed to IP65 with cable entries via IP67 glands (when supplied with option of enclosure)
Options	Supply of ABS enclosure On board temperature sensor Mounting alternatives: DIN rail option

CE & Environmental

Storage temperature	-40 to +85°C
Operating temperature	-40 to +8-°C
Relative humidity	95% maximum non condensing
Safety/Low Voltage Directive	73/23/EEC amended by 93/68/EEC BS EN 61010-1:2001, IEC 1010-1-1990
EMC Directive	89/336/EEC Basic Standard BS EN 61326:1998
EMC Emissions	BS EN 55011:1998
EMC Immunity	BS EN 61000-4-2:1995 BS EN 61000-4-3:2002 BS EN 61000-4-4:2004 BS EN 61000-4-11:2004

Link Description	LK1 & LK5	Select connections to D Type, RS232 or CAN/RS485
	LK2	Provides 120R terminating Resistor for CAN/RS485
	LK3	Selects on board temperature sensor or external device connected to J2
	LK5	Connects digital output to Output LED

J1 Connector Detail	RS485	CAN	RS232
	+V	CAN +	+V
	A	CAN H	Tx
	CH	CAN SH	CH
	B	CAN L	Rx
	-V	CAN GND	GND and -V

J3 Connector Detail	J3 PIN	RS485	CAN	RS232
	2	B	CAN L	Tx
	3	-	-	Rx
	5	GROUND	GROUND	GROUND
	7	A	CAN H	N.C.

TYPE: DJSJ1

www.lcmsystems.com

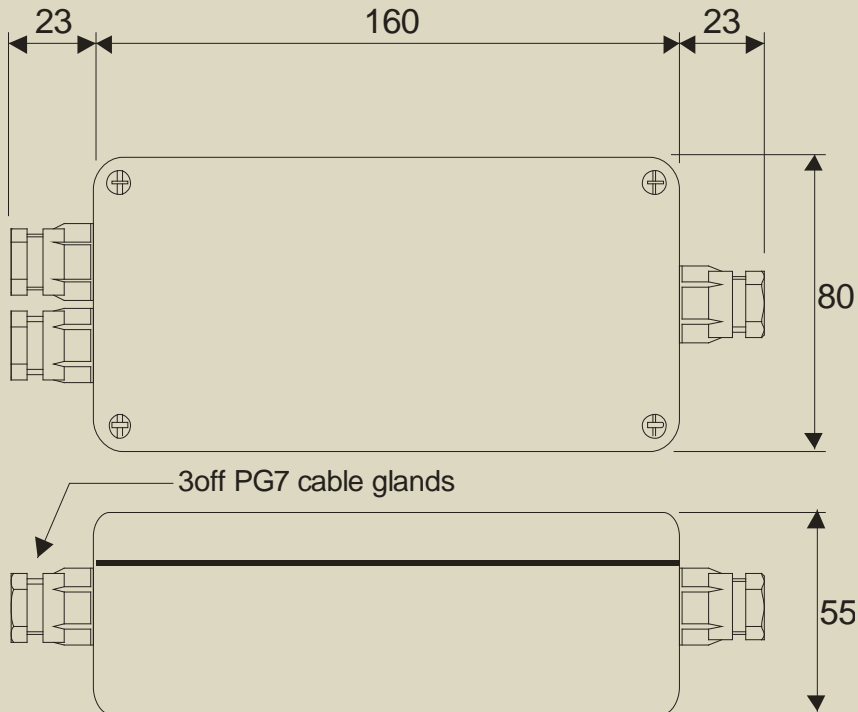
Product Order Codes

DSJ1 (pcb only)
IP65 ABS Grey Case

DSJ1
JAB

Mechanical Dimensions

All dimensions in millimeters



Due to continual product development, LCM Systems Ltd. reserves the right to alter product specifications without prior notice.

Issue Date: 24/9/2008

Unit 15, Newport Business Park
Barry Way, Newport, Isle of Wight, PO30 5GY
United Kingdom
Tel: +44 (0) 1983 249264
Fax: +44 (0) 1983 249266
Email: sales@lcmsystems.com

LCM
SYSTEMS

www.lcmsystems.com

TYPE: DSJ1