



Description

The BP16EF range of pressure transmitters combine the excellent performance of bonded foil strain gauge technology with a single piece stainless steel diaphragm construction, to provide an excellent price/performance ratio, suitable for use in many arduous measurement applications, with integral signal conditioning, providing an amplified current output.

The BP16EF construction makes it ideal for a wide range of applications, including, hydraulic lifting, mobile hydraulic vehicles, portable test gear, air frame test rigs amongst others.

The most popular version of the BP16EF is the integral cable version, which is supplied with a 2 metre PVC cable length. However, an integral connector version is also available, as are versions with different cable lengths or different cable types.

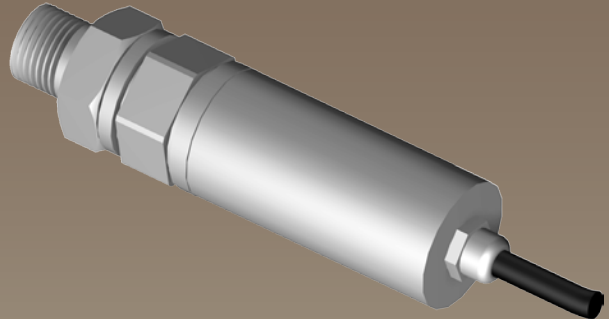
The BP16 family of products offers a variety of output formats, please refer to the BP16 and BP16UVW datasheets.

LCM Systems can supply the BP16 on it's own or integrated with any of the wide range of instrumentation available from LCM Systems.

Typical Applications

- On-board vehicle weighing
- Earthmoving vehicle hydraulic system protection/weighing
- Portable hydraulic test sets
- Air frame test rigs
- Hydraulic system feedback control

BP16EF Current Output Pressure Transmitter



Features

- Ranges 100psig to 15,000psig
- Stainless Steel Diaphragm (single piece construction)
- ¼" BSPP female pressure port (supplied as standard with bonded seal and ¼" male pressure port adaptor)
- 2-wire or 3-wire 4-20mA Output
- mV/V Wheatstone Bridge version available (refer to BP16 datasheet)
- Amplified voltage output version available (refer to BP16UVW datasheet)
- Supplied with 2 metre PVC cable (versions available with integral connector or modified cable lengths/type)

TYPE: BP16EF

www.lcmsystems.com

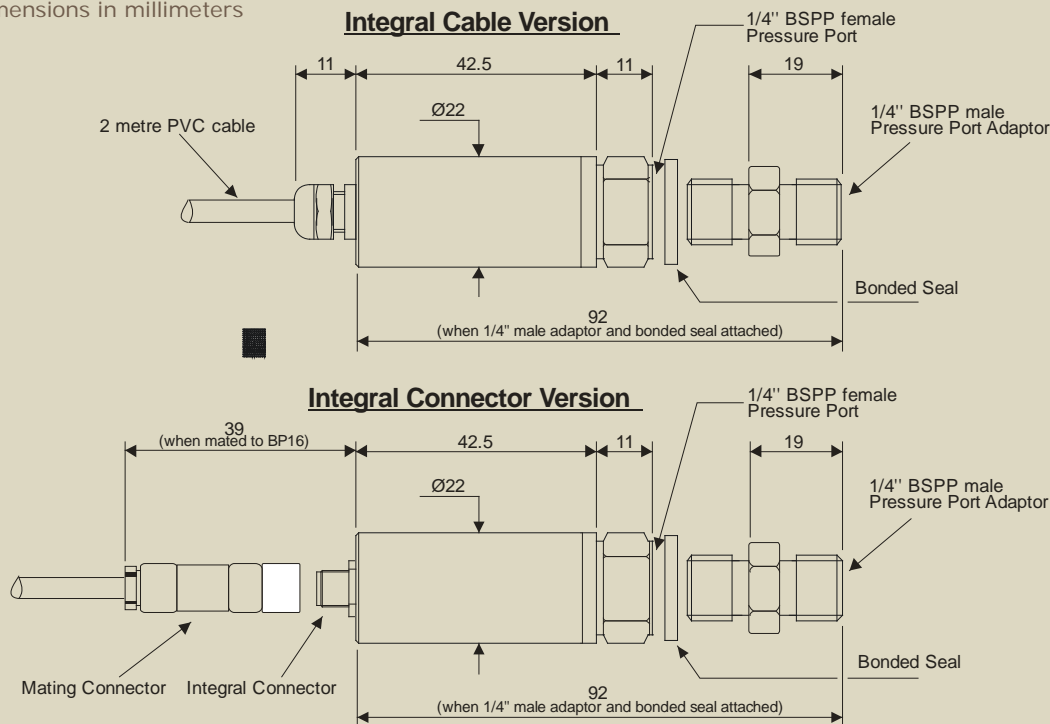
Current Output Pressure Transmitter

Specification

Pressure Range (FSO):	100, 150, 200, 500, 1000, 2000, 3000, 5000, 10000, 15000 psig
Overpressure Range:	200% with $< \pm 1\%$ calibration shift (125% for 15,000psi version)
Burst Pressure:	400% (200% for 15,000psi version)
Output Signal:	BP16E 2-wire 4-20mA (16mA span, $\pm 0.1\%$ tolerance) BP16F 3-wire 4-20mA (16mA span, $\pm 0.1\%$ tolerance)
Zero Offset:	$< \pm 1\%$ FSO
Accuracy:	$< \pm 0.1\%$ FSO ($\pm 0.7\%$ for 100-200psi versions)
Repeatability:	$< \pm 0.1\%$ FSO
Supply Voltage:	BP16E 9Vdc to 30Vdc BP16F 10Vdc to 30Vdc
Maximum Output Load:	BP16E 800ohms at 30Vdc BP16F 250ohms at 30Vdc
Operating Temperature Range:	-20°C to +70°C
Compensated Temperature Range:	+10°C to +60°C
Zero Temperature Coefficient:	$< \pm 0.03\%$ FSO/°C ($< \pm 0.01\%$ FSO/°C optional)
Span Temperature Coefficient:	$< \pm 0.03\%$ FSO/°C ($< \pm 0.01\%$ FSO/°C optional)
Environmental Protection Level:	IP66
Connection Type:	2 metres 4-core screened PVC cable, or 4 pin Lumberg connector (c/w 5m PUR cable).
Options Available:	Consult Factory Many Options and special versions available

Mechanical Dimensions

All dimensions in millimeters



Due to continual product development, LCM Systems Ltd. reserves the right to alter product specifications without prior notice.

Issue Date: 24/9/2008

Unit 15, Newport Business Park
Barry Way, Newport, Isle of Wight, PO30 5GY
United Kingdom
Tel: +44 (0) 1983 249264
Fax: +44 (0) 1983 249266
Email: sales@lcmsystems.com

LCM
SYSTEMS

www.lcmsystems.com

TYPE: BP16EF