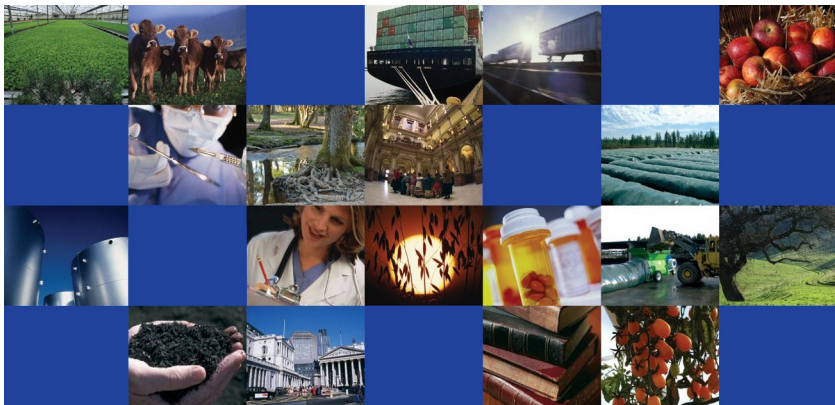


ENG

Tinytag Explorer Software

Quick Start Guide



ABOUT THIS GUIDE

This guide takes you through the process of installing Tinytag Explorer and the basics of starting a data logger and downloading the data recorded by it.

Once Tinytag Explorer has been installed, you can find further information in the software's Help file by going to **Help** and **Contents**.



You can find alternate language versions of this quick start guide on the Tinytag Explorer CD, and on our web site at www.tinytag.info/manuals

WHAT YOU NEED

To use Tinytag Explorer, you will require the following items:

- The Tinytag Explorer CD
- A Tinytag Explorer activation code
- One or more data loggers (with any probes or input cables as appropriate)
- A download cable or inductive pad

If any of the above is missing, please contact your Tinytag supplier.



The activation code for Tinytag Explorer can be found on the back of the Tinytag Explorer CD case. It is a set of 20 characters split up into 5 blocks of 4.

If you have lost or misplaced your activation code, you can request a new one from the Tinytag web site at www.tinytag.info/activationcode

INSTALLING TINYTAG EXPLORER



To install Tinytag Explorer, you will need to have Windows Administrator Access rights on the PC you are using.

- Place the Tinytag Explorer CD into the CD drive of your PC.

The Tinytag Explorer Installer will run automatically after a few seconds and present you with a Welcome screen. If the Tinytag Explorer Installer does not run automatically, open Windows Explorer, navigate to your CD drive and double-click **tinytag.msi**.

- Click **Next** to start the installation.
- Review the software's license agreement and if you accept the terms click **I accept the terms in the License Agreement**, then **Next**.
- You will then be asked where you want to install the software (we recommend you use the default installation path) and whether you would like a shortcut for the software to be created on your desktop. Once you have made your choices, click **Next**, then **Install**.
- The software will then install automatically. If you are using Windows Vista or Windows 7 you may be prompted to confirm your agreement to the installation. When you see the Installation Complete screen, click **Finish**.
- Once the installation is complete, you will be asked to restart your computer, click **Yes** to do this.



STARTING TINYTAG EXPLORER

To start Tinytag Explorer, click on the desktop icon for the software:



If you didn't create a desktop icon when installing the software, you can start the software by going to:

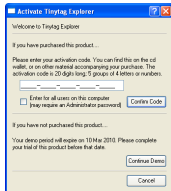
Start >> All Programs >> Tinytag Explorer 4.7 >> Tinytag Explorer

ACTIVATING TINYTAG EXPLORER

The first time you run Tinytag Explorer you will be prompted to activate the software.

Enter the activation code into the box provided and choose whether you want it to be applied to all the user accounts on the computer.

Next click **Confirm Code** and you will see a message to confirm that the code has been accepted.



The activation code for Tinytag Explorer can be found on the back of the Tinytag Explorer CD case. It is a set of 20 characters split up into 5 blocks of 4.

If you have lost or misplaced your activation code, you can request a new one from the Tinytag web site at www.tinytag.info/activationcode



You may need Windows Administrator access rights to activate the software for all user accounts. If you do not have Administrator access rights, leave the box unchecked and the software will only be enabled for the current user account.

ACTIVATING TINYTAG EXPLORER

Demonstration Mode

If you have not purchased Tinytag Explorer, and are evaluating the software, you should start it by clicking the **Start Demo** button.

The demonstration version of Tinytag Explorer will operate for 6 weeks and is a fully enabled copy of the software.

CONNECTING TO A DATA LOGGER

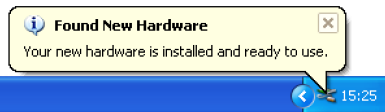
Tinytag data loggers are connected to a computer using a cable or an inductive pad.

To set up a cable or inductive pad, simply plug it into the computer.

If you are using a USB cable or inductive pad you will see a **Found New Hardware** message next to the clock on your PC.



When the cable or inductive pad has installed, the message will change to tell you the device is ready to use:



Next, plug the cable into the data logger, or place the data logger on the centre of the inductive pad.

STARTING A DATA LOGGER



If the data logger is already recording, you may wish to save the data in it before you start it again, otherwise this information will be lost. See page 13 for information on how to download a data logger.

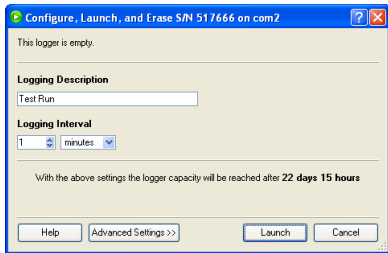


Before starting a data logger, ensure that the correct time and date is set on your computer

With the communication cable plugged into your data logger, or with the logger sitting on an inductive pad, click on the **Launch** icon:



The first time you start a data logger, you will be presented with the **Basic Settings** view.




Once you have entered a description for your logging run, and set the logging interval, the data logger will be ready to use. Click the **Launch** button to start recording.

Should you require to change further settings in the data logger, click the **Advanced Settings** button.

ADVANCED SETTINGS



To change an option on the Advanced Settings page, you will need to click on the  icon next to the option.

Logging Description

Description A label for logger measurements.

The logging description is a text label that is stored in the data logger. This is shown as a graph title on recorded data when it is downloaded from the logger.

Logging Interval

Logging Interval Logger time units:

Seconds Mode

Minutes Mode

How often should the logger store a measurement?

The Logging Interval option enables you to set how often a data logger will record a measurement.

When the logging interval is changed, the logging duration of the logger, which is displayed at the bottom of the page, will update automatically to tell you how long the unit will record for.

With the above settings the logger capacity will be reached after **22 days 15 hours**

ADVANCED SETTINGS

Seconds Mode and Minutes Mode

Most data loggers can be set to record in one of two modes, **Seconds Mode** and **Minutes Mode**.

By default, loggers are set to record in **Minutes Mode**, which means they can be downloaded and have their current readings checked whilst they are recording.

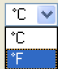
In **Seconds Mode**, a unit has to be stopped before it can be downloaded or a current reading checked.

LCD Display

Tinytag View 2 temperature data loggers have an LCD display that can be set to show the current temperature in either °C or °F.

LCD Display Select the settings for your logger's LCD display:

Temperature



Select your preferred option from the drop down menu.

Start Options

Start Options Relative start time Wait until trigger event.

Delay for days hours minutes

Absolute start time

By default a data logger will start immediately when launched. By changing the different Start Options you can control exactly when a unit will start recording.

ADVANCED SETTINGS

There are two different delay start options that all data loggers have; **Relative start time** and **Absolute start time**.

Relative start time is a time delay relative to the current time, for example, four hours from now.

The **Absolute start time** is a specific time and date, such as midnight on a specified date.



The benefit of using a delayed start is that it gives you time to position the data logger in your application before it starts recording.

Trigger Start

Additional to the relative and absolute start time options, some data loggers also support a trigger start feature. This can be turned on by checking the **Wait until trigger event** box.

Start Options

Relative start time Wait until trigger event.

Delay for days hours minutes

Absolute start time

This feature enables you to set your data logger up as you wish it to record, and then start the unit at the precise moment you wish to (by passing a magnet across the unit, or by pressing a switch).



The Trigger Start option can be used in conjunction with the Relative start time feature to provide a delay after the trigger (this could be used to allow a data logger to get to temperature before it starts recording).

ADVANCED SETTINGS

Measurements

Measurements 

Temperature

- Measured at the end of each interval
- Minimum during each interval
- Maximum during each interval

This setting determines what the logger will record.

You have a choice between the recording the value at the end of each logging interval (this is the default setting), the minimum value seen by the logger during each logging interval and the maximum value seen by the logger during each logging interval (or a combination of any of the three).

When set to record a minimum and/or maximum the logger will check the value of its input once every minute when recording in minutes mode (which is the default). When the logger set to record in seconds mode, it will do this once every second (see page 8 for further information on setting a logger to record in minutes mode or seconds mode). At the end of each logging interval the minimum and/or maximum value is stored.



The benefit of recording minimum and maximum values over a given period is that a data logger can be used in the same way as a traditional min/max thermometer, and the logging duration of the unit can be increased because fewer readings are being stored.

For example, if a data logger is set to record once an hour, with the minimum and maximum values selected, only two readings will be stored each hour, but the units input will have been checked 60 times during that period.

ADVANCED SETTINGS

Stop Options

- Stop Options** What should happen when the logger fills up?
- Run indefinitely. Overwrite oldest readings
 - Stop after readings
 - Stop when full

There are three different stop options for a data logger. The data logger can be set to:

- Run indefinitely (and overwrite its oldest reading)
- Stop after a set number of readings
- Stop when its memory is full.

By default, data loggers are set to stop when full, to prevent data from being overwritten.

Alarms

- Alarms** Note that alarm levels will be rounded to logger resolution steps

Enabled	Property	Alarm Type	Level	
<input checked="" type="checkbox"/>	Temperature	Above	25.0	°C
<input type="checkbox"/>	Temperature	Above	-55.0	°C

The Alarms option enables two alarm limits to be set in a data logger.

If these are breached a red LED on the unit will flash, or a display segment on the unit's LCD will come on.

Alarms can be used to warn if a property goes above or below a set value.

(continued overleaf)

ADVANCED SETTINGS

Normal, non-latching, alarms only cause the red LED on a unit to flash, or an LCD segment to display, when a limit has been exceeded.

Latched alarms will continue to show when the property goes back within acceptable limits. Latched alarms are cleared by going to **Logger** and **Reset Latched Alarms**.

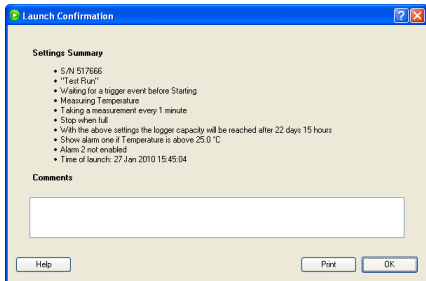
Launch

Once you have set up your data logger as desired, click the Launch button.

A rectangular button with a light blue gradient and a thin border, containing the word "Launch" in a black sans-serif font.

Do not disconnect the data logger from the computer, or remove it from its inductive pad, until the Launch Confirmation page is displayed.

Once the configuration has been written to the data logger, you will see a summary of the settings. This can be printed out for your records if required.



The data logger is now ready to be placed in the location you wish to monitor.

STOPPING A DATA LOGGER

To stop a data logger recording, plug it into your computer, or place it on its inductive pad, and click the **Stop** icon:



Tinytag Explorer will then confirm that the data logger has been stopped.

GETTING DATA FROM A LOGGER

To view the data that has been recorded by your logger, plug it into your computer, or place it on its inductive pad, and click the **Get Data** icon:



Tinytag Explorer will then download the data from the logger.

SAVING DATA

To save data that has been downloaded from a data logger click on the **Save** icon:



In the box that appears, select where you wish to save your data, type in a file name and click **Save**.

CURRENT READINGS

To view current readings from a data logger, plug it into your PC, or place it on its inductive pad, click the **Current Readings** icon:



Use this function to view what a logger is currently reading and whether it is logging or not.

You can also check the status of its battery (depending on the model of data logger being used).

ADDITIONAL FEATURES

This quick start guide covers the basics for getting a data logger up and running. Further features that might be of interest include:

- **Different Data Views:** As well as displaying recorded data graphically, Tinytag Explorer can also display data as a **Table of Readings**.

There are also two summary views; the **Information View** which shows how a data logger was set to record and some basic statistical information and a **Daily Minimum and Maximum View**.

- **Exporting Data:** Data can be exported from Tinytag Explorer by saving it in a different file format, or by using copy and paste.
- **Graph Overlays:** Data from multiple loggers, or data saved from consecutive recording runs from the same logger, can be compiled into the same graph using the Graph Overlay feature.
- **Top and Tail:** The Top/Tail feature allows you to hide unwanted data at the extremities of a graph.
- **Calibration Reminders:** Reminders can be set in Tinytag Explorer to warn you when the calibration of your logger is about to expire.
- **Bulk Logger Tool:** The Bulk Logger Tool is designed to start, stop, get data from and view the current readings of multiple data loggers at the same time.

For further information on all of these features, please see the Help file within the Tinytag Explorer software.

FURTHER INFORMATION

For further information on using Tinytag Explorer, please see the help file within the software.

To open the help file, go to **Help** and **Contents**.

Further information can also be found on our web site at www.tinytag.info/support

If you should have any questions that are not covered by the above, please contact your supplier or Gemini Technical Support.

e: help@tinytag.info t: +44 (0)1243 813009

Gemini Data Loggers (UK) Ltd.

Scientific House, Terminus Road,
Chichester, West Sussex,
PO19 8UJ England.

www.tinytag.info

t: +44 (0)1243 813000

f: +44 (0)1243 531948

e: sales@tinytag.info

Gemini
DATA LOGGERS

9800-0006: Issue 8 (12th February 2010)